

## A Professional Manufacturer for Touchscreen Products

**Open Frame Touch Monitors | Touch Panel PCs**

**Projected Capacitive Touchscreens | Decorative LED Touch Monitors | Interactive Flat Panels | Interactive Whiteboards | Stands & Mounts | Peripherals | Computer Modules (Android & Windows)**





# TABLET OF CONTENTS

## Open Frame Touch Monitors

- 04** Bezel-free Open Frame PCAP Touch Monitors
- 05** Flat Bezel Open Frame PCAP Touch Monitors
- 06** Flat Bezel Open Frame Resistive Touch Monitors

## Touch Panel PCs

- 07** Bezel-free Open Frame PCAP Touch Panel PCs
- 08** Flat Bezel Open Frame PCAP Touch Panel PCs
- 09** Flat Bezel Open Frame Resistive Touch Panel PCs

## Projected Capacitive Touchscreens

- 10** Small & Medium Size PCAP Touchscreens
- 11** Large Format PCAP Touchscreens
- 12** Decorative LED Touch Monitors
- 13** Interactive Flat Panels
- 14** Interactive Whiteboards
- 15** Accessories

## Stands & Mounts

Wall Mounts | Floor Stands | Table Stands

## Peripherals

Magnetic Stripe Readers | Touch Stylus

## Computer Modules

Windows Computer Modules | Android Computer Modules

## Open Frame Touch Monitors

### Bezel-free Open Frame PCAP Touch Monitors



#### Overview

The open frame touch monitors include bezel-free & flat bezel types with PCAP or resistive touch technology, which delivers an industrial & reliable solution with outstanding image clarity and accurate touch response that is cost-effective for OEMs and systems integrators. Embedded eye-catching and rugged bezel with flush front finish structure delivers flat design with high durability and scratch & water resistance. It is available in a wide range of sizes (7" to 55"), offering the versatility for embedded kiosk applications from self-service, gaming, industrial automation to digital signage & healthcare.

#### Features

- Touch thru glass enabled with PCAP supports thickness up to 5mm
- Embedded design with sturdy metal or aluminum (optional for back) enclosure
- IP65 (front) for water and dust protection; Flexible mounting in any table, kiosk, or cabinet design

#### Specifications

##### Panel

Diagonal Size	7 - 55"(4:3 / 16:9 / 16:10), 17.78 - 139.7cm, Active matrix TFT LCD (LED)
Active Area (mm)	153.6 mm x 90 mm – 1209.6 mm x 680.4 mm
Resolution	800 x 600 / 1024 x 600 / 1024 x 768 / 1280 x 800 / 1280 x 1024 / 1920 x 1080
Viewing Angle	Horizontal: 75 - 89° or 150 - 178° total / Vertical: 75 - 89° or 145 - 178° total
Number of Colors	16.7 million
Brightness (typical)	Panel: 250 -1500 nits / With PCAP Touch: 215 - 1465 nits
Response Time-total	8 - 25 msec typical
Contrast Ratio	500:1 - 1200:1
Input Video Frequency	Horizontal: 30 - 60 KHz / Vertical: 50 - 75 Hz

##### Touch

Touch Technology	PCAP (Projected Capacitive) - 10 Touch Capacity
Surface Treatment	Water, Dust & Vandal proof, Anti-glare; Anti-fingerprint, Anti-smudge, Anti-bacterial (opt.)
Supported OS	Windows / Android / Linux / Mac

##### Interfaces / Connectors / Controls

Video Interfaces	VGA x1 / HDMI x1 / DVI x1 (opt.) / Display Port x1 (opt.) / USB x1 for Touch; HDCP: Yes
Connectors & Controls	Audio Mini jack x1 / DC x1; 5 OSD buttons

<b>Power</b>	Supply / Consumption: 100-240 VAC / 12VDC +/- 5%; 10 - 75W typical, 1.5W sleep, 0.5W off
<b>Mechanical</b>	Sizes & Weight / Mount: Subject to change; 75 / 100mm

<b>Environmental</b>	Operating / Storage Temperature: -10°C to 60°C / -20°C to 60°C
----------------------	----------------------------------------------------------------

<b>Accessories</b>	Power adapter / cable, HDMI / VGA / Touch USB cable, Flush Mount Brackets w/Screws
--------------------	------------------------------------------------------------------------------------

<b>Others</b>	MTBF / Warranty / Enclosure Color: 50,000 hours demonstrated / 1-year / black Ready for Use: 24/7
---------------	------------------------------------------------------------------------------------------------------

# Open Frame Touch Monitors

## Flat Bezel Open Frame PCAP Touch Monitors



### Overview

The open frame touch monitors include bezel-free & flat bezel types with PCAP or resistive touch technology, which delivers an industrial & reliable solution with outstanding image clarity and accurate touch response that is cost-effective for OEMs and systems integrators. Embedded eye-catching and rugged bezel with flush front finish structure delivers flat design with high durability and scratch & water resistance. It is available in a wide range of sizes (7" to 55"), offering the versatility for embedded kiosk applications from self-service, gaming, industrial automation to digital signage & healthcare.

### Features

- Touch thru glass enabled with PCAP supports thickness up to 5mm
- Full flat design with sturdy **aluminum front bezel** and metal enclosure
- IP65 (front) for water and dust protection; Flexible mounting in any table, kiosk, or cabinet design

### Specifications

#### Panel

Diagonal Size	8.4 - 21.5"(4:3 / 16:9 / 16:10), 21.33 - 55cm, Active matrix TFT LCD (LED)
Active Area (mm)	170.4 mm x 127.8 mm - 476.64 mm x 268.11 mm
Resolution	800 x 600 / 1024 x 600 / 1024 x 768 / 1280 x 800 / 1280 x 1024 / 1920 x 1080
Viewing Angle	Horizontal: 75 - 89° or 150 - 178° total / Vertical: 75 - 89° or 145 - 178° total
Number of Colors	16.7 million
Brightness (typical)	Panel: 250 -1500 nits / With PCAP Touch: 215 - 1465 nits
Response Time-total	8 - 25 msec typical
Contrast Ratio	500:1 - 1000:1
Input Video Frequency	Horizontal: 30 - 60 KHz / Vertical: 50 - 75 Hz

#### Touch

Touch Technology	PCAP (Projected Capacitive) - 10 Touch Capacity
Surface Treatment	Water, Dust & Vandal proof, Anti-glare; Anti-fingerprint, Anti-smudge, Anti-bacterial (opt.)
Supported OS	Windows / Android / Linux / Mac

#### Interfaces / Connectors / Controls

Video Interfaces	VGA x1 / HDMI x1 / DVI x1 (opt.) / Display Port x1 (opt.) / USB x1 for Touch; HDCP: Yes
Connectors & Controls	Audio Mini jack x1 / DC x1; 5 OSD buttons

<b>Power</b>	Supply / Consumption: 100-240 VAC / 12VDC +/- 5%; 10 - 75W typical, 1.5W sleep, 0.5W off
--------------	------------------------------------------------------------------------------------------

<b>Mechanical</b>	Sizes & Weight / Mount: Subject to change; 75 / 100mm
-------------------	-------------------------------------------------------

<b>Environmental</b>	Operating / Storage Temperature: -10°C to 60°C / -20°C to 60°C
----------------------	----------------------------------------------------------------

<b>Accessories</b>	Power adapter/cable, HDMI/VGA/Touch USB cable, wall mount / table stands w/screws (opt.)
--------------------	------------------------------------------------------------------------------------------

<b>Others</b>	MTBF / Warranty / Bezel Color: 50,000 hours demonstrated / 1-year / silver or black Ready for Use: 24/7
---------------	------------------------------------------------------------------------------------------------------------

# Open Frame Touch Monitors

## Flat Bezel Open Frame Resistive Touch Monitors



### Overview

The open frame touch monitors include bezel-free & flat bezel types with PCAP or resistive touch technology, which delivers an industrial & reliable solution with outstanding image clarity and accurate touch response that is cost-effective for OEMs and systems integrators. Embedded eye-catching and rugged bezel with flush front finish structure delivers flat design with high durability and scratch & water resistance. It is available in a wide range of sizes (7" to 55"), offering the versatility for embedded kiosk applications from self-service, gaming, industrial automation to digital signage & healthcare.

### Features

- **Five-wire resistive touch** technology
- Full flat design with sturdy **metal front bezel** and metal enclosure
- IP65 (front) for water and dust protection; Flexible mounting in any table, kiosk, or cabinet design

### Specifications

#### Panel

Diagonal Size	10.4 - 21.5"(4:3 / 16:9 / 16:10), 26.42 - 55cm, Active matrix TFT LCD (LED)
Active Area (mm)	211.2 mm x 158.4 mm - 476.64 mm x 268.11 mm
Resolution	800 x 600 / 1024 x 600 / 1024 x 768 / 1280 x 800 / 1280 x 1024 / 1920 x 1080
Viewing Angle	Horizontal: 75 - 89° or 150 - 178° total / Vertical: 75 - 89° or 145 - 178° total
Number of Colors	16.7 million
Brightness (typical)	Panel: 250 -1500 nits / With PCAP Touch: 215 - 1465 nits
Response Time-total	8 - 25 msec typical
Contrast Ratio	500:1 - 1000:1
Input Video Frequency	Horizontal: 30 - 60 KHz / Vertical: 50 - 75 Hz

#### Touch

Touch Technology	5-Wire Resistive – Single-Touch
Touch Method	Stylus, finger, glove
Supported OS	Windows / Android / Linux / Mac

#### Interfaces / Connectors / Controls

Video Interfaces	VGA x1 / HDMI x1 / DVI x1 (opt.) / Display Port x1 (opt.) / USB x1 for Touch; HDCP: Yes
Connectors & Controls	Audio Mini jack x1 / DC x1; 5 OSD buttons

<b>Power</b>	Supply / Consumption: 100-240 VAC / 12VDC +/- 5%; 1.2 - 25W typical, 1.5W sleep, 0.5W off
<b>Mechanical</b>	Sizes & Weight / Mount: Subject to change; 75 / 100mm

<b>Environmental</b>	Operating / Storage Temperature: -10°C to 60°C / -20°C to 60°C
----------------------	----------------------------------------------------------------

<b>Accessories</b>	Power adapter/cable, HDMI/VGA/Touch USB cable, wall mount / table stands w/screws (opt.)
--------------------	------------------------------------------------------------------------------------------

<b>Others</b>	MTBF / Warranty / Bezel Color: 50,000 hours demonstrated / 1-year / black Ready for Use: 24/7
---------------	--------------------------------------------------------------------------------------------------

## Touch Panel PCs

### Bezel-free Open Frame PCAP Touch Panel PCs



#### Overview

The industrial Touch Panel PCs size from 7" to 55", include the bezel-free and flat bezel type with PCAP or resistive touch technology. It is a great computing solution when your application requires the PCs to be integrated into equipment. Powered by Android or Intel Core i3 / i5 / i7 and a heavy-duty aluminum or steel enclosure with high performances, it can withstand harsh industrial environment with multiple I/O & expansion slots. Built with rugged internal components, fanless cooling systems make it ideal for industrial applications from self-service kiosks, gaming, industrial automation to signage.

#### Features

- Touch thru glass enabled with PCAP supports thickness up to 5mm
- Embedded design with sturdy metal or aluminum (optional for back) enclosure & fanless system
- IP65 (front) for water and dust protection; Flexible mounting in any table, kiosk, or cabinet design

#### Specifications

##### System

Processor	Android: RK3188 / RK3288 Quad-core Cortex-A9 / A17 1.6 / 1.8GHz Windows: Intel® J1900 Quad Core 2.0GHz / Intel® Core™ i3 / i5 / i7
Memory(RAM)	Android: DDR3 1GB / <b>2GB (std)</b> / 4GB; Windows: <b>2GB (std)</b> / 4GB / 8GB / 16GB / 32GB
Storage	Android: 4GB/ <b>8GB(std)</b> /16GB eMMC Flash; Windows: <b>32GB (std)</b> /64GB/128GB/240GB SSD

##### Panel

Diagonal Size	7 - 43"(4:3 / 16:9 / 16:10), 17.78 - 108cm, Active matrix TFT LCD (LED)
Active Area (mm)	153.6 mm x 90 mm – 940.8 mm x 529.2 mm
Resolution / Contrast	800 x 600 / 1024 x 600 / 1024 x 768 / 1280 x 800 / 1280 x 1024 / 1920 x 1080 & 500 - 1200:1
Viewing Angle	Horizontal: 75 - 89° or 150 - 178° total / Vertical: 75 - 89° or 145 - 178° total
Number of Colors	16.7 million
Brightness (typical)	Panel: 250 -1500 nits / With PCAP Touch: 215 - 1465 nits
Response Time-total	8 - 30 msec typical
Input Video Frequency	Horizontal: 30 - 60 KHz / Vertical: 50 - 75 Hz

##### Touch

PCAP (Projected Capacitive) touch technology - 10 Touch Capacity

Surface Treatment Water, Dust & Vandal proof, Anti-glare; Anti-fingerprint, Anti-smudge, Anti-bacterial (opt.)

##### I / O Ports

Android	USB x2 or 4 / COM x1 or 2 / HDMI x1 / LAN x1 / WIFI x1 / DC x1 / TF-CARD x1 / Audio x1
Windows	USB x4 / COM x2 / VGA x1 / HDMI x1 / LAN x1 / WIFI x1 / DC x1 / Audio x1 / Mic x1

##### Power

Supply / Consumption: 100-240 VAC / 12VDC +/- 5%; 15 - 75W typical, 5W sleep, 0.5W off

##### Mechanical

Sizes & Weight / Mount: Subject to change; 75 / 100mm

##### Environmental

Operating / Storage Temperature: -10°C to 60°C / -20°C to 60°C

##### Accessories

Power adapter / cable, flush mount brackets w/screws (opt.)

##### Others

Warranty / Enclosure Color / Ready for Use: 1-year / black / 24/7



## Touch Panel PCs

### Flat Bezel Open Frame PCAP Touch Panel PCs



#### Overview

The industrial Touch Panel PCs size from 7" to 55", include the bezel-free and flat bezel type with PCAP or resistive touch technology. It is a great computing solution when your application requires the PCs to be integrated into equipment. Powered by Android or Intel Core i3 / i5 / i7 and a heavy-duty aluminum or steel enclosure with high performances, it can withstand harsh industrial environment with multiple I/O & expansion slots. Built with rugged internal components, fanless cooling systems make it ideal for industrial applications from self-service kiosks, gaming, industrial automation to signage.

#### Features

- Touch thru glass enabled with PCAP supports thickness up to 5mm
- **Full flat** design with sturdy **aluminum front bezel** and metal enclosure
- IP65 (front) for water and dust protection; Flexible mounting in any table, kiosk, or cabinet design

#### Specifications

##### System

Processor	RK3188 / RK3288 Quad-core Cortex-A9 / A17 1.6 / 1.8GHz
Memory(RAM)	DDR3 1GB / <b>2GB (std)</b> / 4GB
Storage	4GB / <b>8GB(std)</b> /16GB eMMC Flash

##### Panel

Diagonal Size	8.4 - 27"(4:3 / 16:9 / 16:10), 21.33 – 68.6cm, Active matrix TFT LCD (LED)
Active Area (mm)	170.4 mm x 127.8 mm - 597.88 mm x 336.31 mm
Resolution	800 x 600 / 1024 x 600 / 1024 x 768 / 1280 x 800 / 1280 x 1024 / 1920 x 1080
Viewing Angle	Horizontal: 75 - 89° or 150 - 178° total / Vertical: 75 - 89° or 145 - 178° total
Number of Colors	16.7 million
Brightness (typical)	Panel: 250 -1500 nits / With PCAP Touch: 215 - 1465 nits
Response Time-total	8 - 25 msec typical
Contrast Ratio	500:1 - 3000:1
Input Video Frequency	Horizontal: 30 - 60 KHz / Vertical: 50 - 75 Hz

##### Touch

Touch Technology	PCAP (Projected Capacitive) - 10 Touch Capacity
Surface Treatment	Water, Dust & Vandal proof, Anti-glare; Anti-fingerprint, Anti-smudge, Anti-bacterial (opt.)
Supported OS	Android

##### I / O Ports

USB x**2(std)** or 4 / COM x**1(std)** or 2 / HDMI x1 /LAN x1/WIFI x1/DC x1/TF-CARD x1/Audio x1

##### Power

Supply / Consumption: 100-240 VAC / 12VDC +/- 5%; 15 - 35W typical, 5W sleep, 0.5W off

##### Mechanical

Sizes & Weight / Mount: Subject to change; 75 / 100mm

##### Environmental

Operating / Storage Temperature: -10°C to 60°C / -20°C to 60°C

##### Accessories

Power adapter/cable, HDMI/VGA/Touch USB cable, wall mount / table stands w/screws (opt.)



## Touch Panel PCs

### Flat Bezel Open Frame Resistive Touch Panel PCs



#### Overview

The industrial Touch Panel PCs size from 7" to 55", include the bezel-free and flat bezel type with PCAP or resistive touch technology. It is a great computing solution when your application requires the PCs to be integrated into equipment. Powered by Android or Intel Core i3 / i5 / i7 and a heavy-duty aluminum or steel enclosure with high performances, it can withstand harsh industrial environment with multiple I/O & expansion slots. Built with rugged internal components, fanless cooling systems make it ideal for industrial applications from self-service kiosks, gaming, industrial automation to signage.

#### Features

- **Five-wire resistive touch** technology
- Full flat design with sturdy **metal front bezel** and metal enclosure
- IP65 (front) for water and dust protection; Flexible mounting in any table, kiosk, or cabinet design

#### Specifications

##### System

Processor	Android: RK3188 / RK3288 Quad-core Cortex-A9 / A17 1.6 / 1.8GHz Windows: Intel® J1900 Quad Core 2.0GHz / Intel® Core™ i3 / i5 / i7
Memory(RAM)	Android: DDR3 1GB / <b>2GB (std)</b> / 4GB; Windows: <b>2GB (std)</b> / 4GB / 8GB / 16GB / 32GB
Storage	Android: 4GB/ <b>8GB(std)</b> /16GB eMMC Flash; Windows: <b>32GB (std)</b> /64GB/128GB/240GB SSD

##### Panel

Diagonal Size	10.4 - 21.5"(4:3 / 16:9 / 16:10), 26.42 - 55cm, Active matrix TFT LCD (LED)
Active Area (mm)	211.2 mm x 158.4 mm - 476.64 mm x 268.11 mm
Resolution / Contrast	800 x 600 / 1024 x 600 / 1024 x 768 / 1280 x 800 / 1280 x 1024 / 1920 x 1080 & 500 - 1000:1
Viewing Angle	Horizontal: 75 - 89° or 150 - 178° total / Vertical: 75 - 89° or 145 - 178° total
Number of Colors	16.7 million
Brightness (typical)	Panel: 250 -1500 nits / With PCAP Touch: 215 - 1465 nits
Response Time-total	8 - 25 msec typical
Input Video Frequency	Horizontal: 30 - 60 KHz / Vertical: 50 - 75 Hz

##### Touch

5-Wire Resistive – Single-Touch

Touch Method

Stylus, finer, glove

##### I / O Ports

Android	USB x2 or 4 / COM x1 or 2 / HDMI x1 / LAN x1 / WIFI x1 / DC x1 / TF-CARD x1 / Audio x1
Windows	USB x4 / COM x2 / VGA x1 / HDMI x1 / LAN x1 / WIFI x1 / DC x1 / Audio x1 / Mic x1

##### Power

Supply / Consumption: 100-240 VAC / 12VDC +/- 5%; 15 - 35W typical, 5W sleep, 0.5W off

##### Mechanical

Sizes & Weight / Mount: Subject to change; 75 / 100mm

##### Environmental

Operating / Storage Temperature: -10°C to 60°C / -20°C to 60°C

##### Accessories

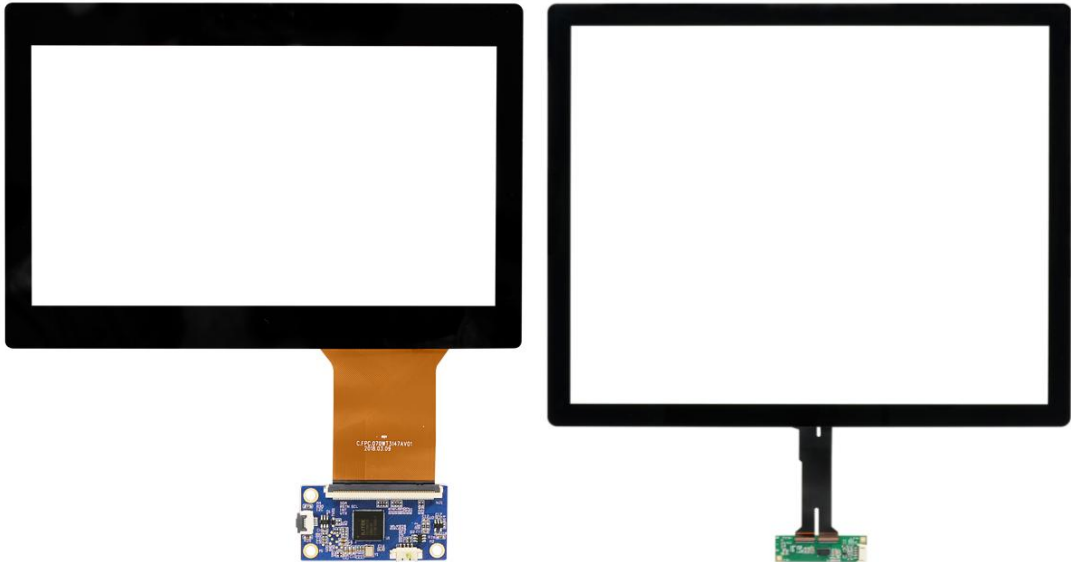
Power adapter/cable, HDMI/VGA/Touch USB cable, wall mount / table stands w/screws (opt.)

##### Others

Warranty / Bezel Color / Ready for Use: 1-year / black / 24/7

Projected Capacitive Touchscreens

Small & Medium Size PCAP Touchscreens



Overview

With a stylish, sleek no-bezel design (bezel available), our Projected Capacitive (PCAP) Touchscreens offer a range of screen sizes (small & medium and large format from 5” to 85”) with user friendly multi-touch experience, fast and sensitive response and professional-grade reliability associated with kiosks, digital signage and control panels, operating with very light touch through highly durable glass surface. Our projected capacitive touch screen kits provide a high quality Glass on Glass sensor construction through the integration of touch panels, controllers, and drivers for commercial applications.

Features

- Multi-touch (10 points) operation with high light transmission and image clarity
- Two glass PCAP solution (2GS) with high touch durability and long term stability
- Customizable for screen dimensions, cover glass thickness, bonding and surface treatments

Specifications

Technology	PCAP(Projected Capacitive)
Number of Touches	10 points Multi Touch
Input Methods	Finger, Gloved hand, Passive stylus
Dimensions	Sizes from 5” to 32”
Light Transmittance	≥ 90%
Overall / Cover Glass	Thickness: 3.1mm and 1.8mm
Surface Treatment	Waterproof, Vandal-proof, Dustproof Anti-glare, Anti-fingerprint, Anti-smudge, Anti-bacterial (optional)
Durability	Over 50 million touches in one location
Positional Accuracy	± 1.5mm
Interface	USB, I2C or RS232/Serial
Report Rate	≥ 100Hz
Operating System	Windows / Android / Linux
Utilities	Multiple monitor, Various touch modes, Touch zones
Operating Temperature	-30° to 70°C (Non Condensing)
Humidity	RH <90% (Non-Condensing)
Warranty	2 Years
Humidity	RH <90% (Non-Condensing)

**Note** Actual technical specs dependent on multiple design variables from touch IC to screen sizes.

# Projected Capacitive Touchscreens

## Large Format PCAP Touchscreens



### Overview

With a stylish, sleek no-bezel design (bezel available), our Projected Capacitive (PCAP) Touchscreens offer a range of screen sizes (small & medium and large format from 5" to 85") with user friendly multi-touch experience, fast and sensitive response and professional-grade reliability associated with kiosks, digital signage and control panels, operating with very light touch through highly durable glass surface. Our projected capacitive touch screen kits provide a high quality Glass on Glass sensor construction through the integration of touch panels, controllers, and drivers for commercial applications.

### Features

- Multi-touch (10 points) operation with high light transmission and image clarity
- Two glass PCAP solution (2GS) with high touch durability and long term stability
- Customizable for screen dimensions, cover glass thickness, bonding and surface treatments

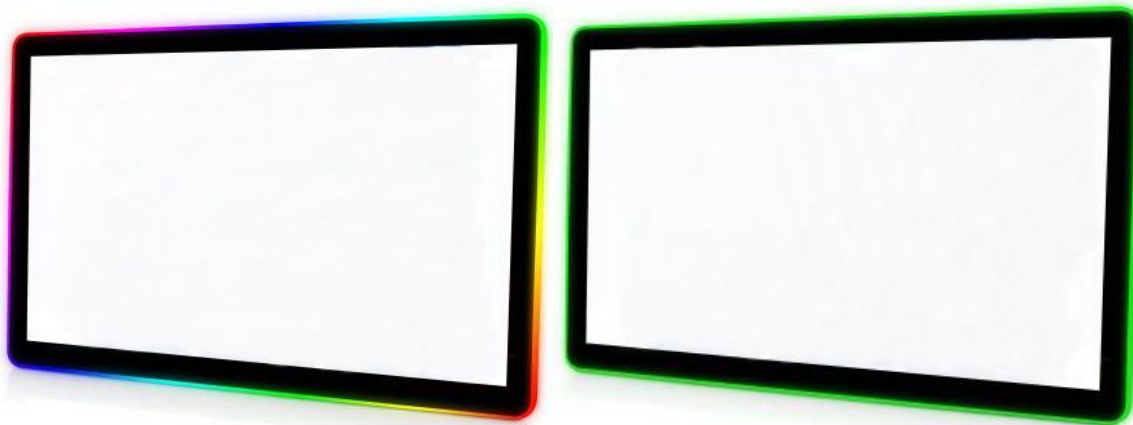
### Specifications

Technology	PCAP(Projected Capacitive)
Number of Touches	10 points Multi Touch
Input Methods	Finger, Gloved hand, Passive stylus
Dimensions	Sizes from 42" to 85"
Light Transmittance	$\geq 85\% \pm 3\%$
Overall / Cover Glass	Thickness: 4.3mm and 3mm (other thicknesses and tempered glass available)
Surface Treatment	Waterproof, Vandal-proof, Dustproof Anti-glare, Anti-fingerprint, Anti-smudge, Anti-bacterial (optional)
Durability	Over 50 million touches in one location
Positional Accuracy	$\pm 2\text{mm}$
Interface	USB, I2C or RS232/Serial
Report Rate	$\geq 100\text{Hz}$
Operating System	Windows / Android / Linux
Utilities	Multiple monitor, Various touch modes, Touch zones
Operating Temperature	$-30^{\circ}$ to $70^{\circ}\text{C}$ (Non Condensing)
Humidity	RH <95% (Non-Condensing)
Warranty	2 Years
Humidity	RH <90% (Non-Condensing)

**Note** Actual technical specs dependent on multiple design variables from touch IC to screen sizes.

## Decorative LED Touch Monitors

### Decorative LED VESA Mount PCAP Touch Monitors



#### Overview

The open frame touch monitors include bezel-free & flat bezel types with PCAP or resistive touch technology, which delivers an industrial & reliable solution with outstanding image clarity and accurate touch response that is cost-effective for OEMs and systems integrators. Embedded eye-catching and rugged bezel with flush front finish structure delivers flat design with high durability and scratch & water resistance. It is available in a wide range of sizes (7" to 55"), offering the versatility for embedded kiosk applications from self-service, gaming, industrial automation to digital signage & healthcare.

#### Features

- Touch(**optional for no touch**) thru glass enabled with PCAP **with Customized LED Tiles** for casino slot machines
- True-flat design with IP65 protection for floating monitor outside your cabinet **with Halo Effect**
- **Compatible with 3M or ELO drivers**, supports WMS, POT-O-Goden and Blue Bird games
- Side LED tiles react to on-screen events, enhancing game features, building anticipation and celebrating big wins

#### Specifications

##### Panel

Diagonal Size	19 - 27"(5:4 / 16:9), 48cm, Active matrix TFT LCD (LED)
Active Area (mm)	377.32 mm x 302.06 mm - 597.88 mm x 336.31 mm
Resolution	1280 x 1024 / 1920 x 1080
Viewing Angle	Horizontal: 89° or 178° total / Vertical: 89° or 178° total
Number of Colors	16.7 million
Brightness (typical)	Panel: 250 nits / With PCAP Touch: 215 nits
Response Time-total	12 -16 msec typical
Contrast Ratio	1000:1 / 3000:1
Input Video Frequency	Horizontal: 30 - 60 KHz / Vertical: 50 - 75 Hz

##### Touch

Touch Technology	PCAP (Projected Capacitive) - 10 Touch Capacity
Surface Treatment	Water, Dust & Vandal proof, Anti-glare; Anti-fingerprint, Anti-smudge, Anti-bacterial (opt.)
Supported OS	Windows / Android / Linux / Mac

##### Interfaces / Connectors / Controls

Video Interfaces	VGA x1 & DVI x1 (std) / HDMI or AV x1 (optional) / USB or RS-232 x1 for Touch; HDCP: Yes
Connectors & Controls	Audio Mini jack x1 / DC x1; 5 OSD buttons

##### Power

Supply / Consumption: 100-240 VAC / 12VDC +/- 5%; 17 -27W typical, 1.5W sleep, 0.5W off

##### Mechanical

Sizes & Weight / Mount: Subject to change; 75 / 100mm

##### Environmental

Operating / Storage Temperature: -10°C to 60°C / -20°C to 60°C

##### Accessories

Power adapter/cable, HDMI/VGA/Touch USB/RS-232 cable, VESA mount bracket w/scr(opt.)

##### Others

MTBF / Warranty / Enclosure Color: 50,000 hours demonstrated / 1-year / black

## 43" Curved Decorative LED VESA Mount PCAP Touch Monitors



### Overview

The open frame touch monitors include bezel-free & flat bezel types with PCAP or resistive touch technology, which delivers an industrial & reliable solution with outstanding image clarity and accurate touch response that is cost-effective for OEMs and systems integrators. Embedded eye-catching and rugged bezel with flush front finish structure delivers flat design with high durability and scratch & water resistance. It is available in a wide range of sizes (7" to 55"), offering the versatility for embedded kiosk applications from self-service, gaming, industrial automation to digital signage & healthcare.

### Features

- Touch(**optional for no touch**) thru glass enabled with PCAP **with Customized LED Tiles** for casino slot machines
- True-flat design with IP65 protection for floating monitor outside your cabinet **with Halo Effect**
- Side LED tiles react to on-screen events, enhancing game features, building anticipation and celebrating big wins

### Specifications

#### Panel

Diagonal Size	43"(16:9), 109.22cm, Active matrix TFT LCD (LED)
Active Area (mm)	941.18 mm x 529.42 mm
Resolution	1920 x 1080
Viewing Angle	Horizontal: 89° or 178° total / Vertical: 89° or 178° total
Number of Colors	16.7 million
Brightness (typical)	Panel: 450 nits / With PCAP Touch: 405 nits
Response Time-total	8 msec typical
Contrast Ratio	4000:1
Input Video Frequency	Horizontal: 30 - 60 KHz / Vertical: 50 - 75 Hz

#### Touch

Touch Technology	PCAP (Projected Capacitive) - 10 Touch Capacity
Surface Treatment	Water, Dust & Vandal proof, Anti-glare; Anti-fingerprint, Anti-smudge, Anti-bacterial (opt.)
Supported OS	Windows / Android / Linux / Mac

#### Interfaces / Connectors / Controls

Video Interfaces	HDMI x1 / DVI x1 / DP x1 / USB(Type B) x1 for Touch; HDCP: Yes
Connectors & Controls	Audio Mini jack x1 / DC x1; 5 OSD buttons

**Power** Supply / Consumption: 100-240 VAC / 12VDC +/- 5%; 90W typical, 1.5W sleep, 0.5W off

**Mechanical** Product Dimension: 1020.18 x 619.6 x 157.29mm/Weight(Unpacked/Packed): 23/29kg(1pcs)  
Box Dimensions: 1145 x 240 x 785mm (1pcs) / VESA Mounting: 600 x 300mm

**Environmental** Operating / Storage Temperature: -10°C to 60°C / -20°C to 60°C

**Accessories** Power adapter/cable, HDMI/VGA/Touch USB/RS-232 cable, VESA mount bracket w/scr(opt.)

**Others** MTBF / Warranty / Case/Bezel Color: 50,000 hours demonstrated / 1-year / black  
Ready for Use: 24/7



## Interactive Flat Panels



Our **Interactive Panels** integrate LED screen (instead of projector), built-in PC, TV function and infrared interactive solution into one system. It adopts the infrared technology with same PCB structure and interactive function as this series. Modular design is convenient for maintenance and technology update. The **Interactive Panels** series offers low power consumption, a slim external housing, and recognition of up to 10 simultaneous touches with infrared or PCAP (projected capacitive) touch technology. Various sizes are available ranging from 55", 65", 75", 86" to 98".

This **Interactive Panels** Series is an integrated solution, which is designed to improve multimedia teaching and learning, enable you to realize interactive teaching, integrate the features of writing, annotation, capturing and displaying image of objects, text recognition, external VGA, playing audio and video into Interactive Multimedia System in one, greatly improved the problems as follows within the solution of multi devices: scatter of multimedia equipments, disarray of wires and cables, complex operation, the compatibility among different components.

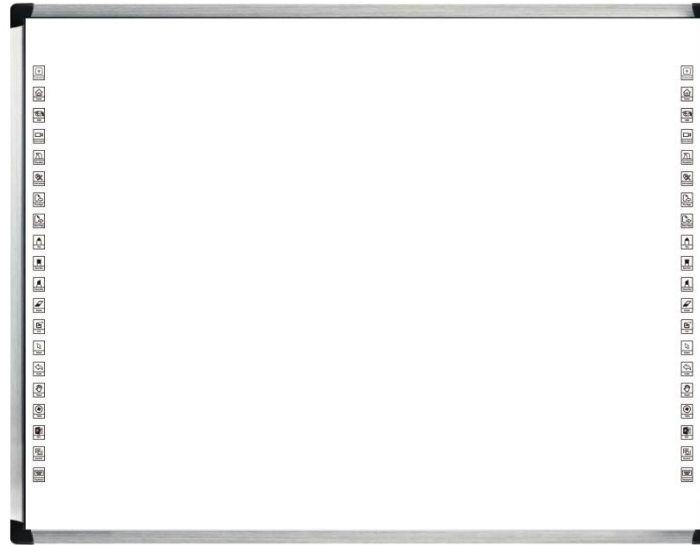
Whether it's in a classroom, meeting room, conference centre, public area or commercial space, this **Interactive Panels** series can improve the way you communicate. We provide the tools that allow people and businesses to share their messages in vibrant and exciting ways. Explore our product categories to learn more about our technology and see how we can change the way you integrate digital content to share, edit, and collaborate.

### Features & Functions

Multi-screen Interaction, Multi-screen Display, Easy to Switch, Remote Collaboration across Space, Smart Writing, Smooth and Free, Ultra-fast Response Speed, Convenient Gesture Operation, Conclusion, Super Clear Display, Anti-glare, Record, Free and Easy Smart Writing, Ultra-strong infrared touch up to 20 points of infrared touch, Recognition technology enhances the smart writing experience, Safe and Reliable, Multi-window Switching, Mail Delivery, Touch Pen, Energy Saving, Module Design, OPS & Android, Elegant Structure

## Overview

### IR (Infrared) Interactive Whiteboards



The Interactive Whiteboard has **infrared** transmitters and receivers, which linked to a USB main board and fixed inside rigid aluminum frames, forming a square scanning infrared ray net on the surface when connected to a computer by USB cable. When a finger or other non-transparent object touches on the surface, this touching point's coordinate (x, y) is immediately transmit to the main board and forms a corresponding PC operation.

Meanwhile, the panel itself is free of technology, guaranteeing longer life time than any other types of interactive whiteboards. Four points touch bring maximum four students collaboration at the same time. Teachers can design more interactive lessons and students will be even more engaged in the learning process.

## Features

### Hands-on learning, intuitive capabilities

**A catalyst for class participation.** Intuitive design. Engaging digital workspace. True multi-student collaboration and small group learning. Encourage critical thinking and problem-solving. Spark better learning outcomes for all.

### Multitouch Collaboration

With multi-touch interactivity, multiple students can work together or independently at the board with fingers or a pen.

### Freestyle interaction

Every surface inch is a collaborative workspace – multiple students, multiple actions

### Intuitive at every touch

Go from pen to fingers to palm of your hand, interchangeably with object awareness. Flick, rotate, zoom and erase with natural touch gestures.

**In the classroom** - Inspired collaboration is inclusive. Learn how our unleashes learning for every ability.



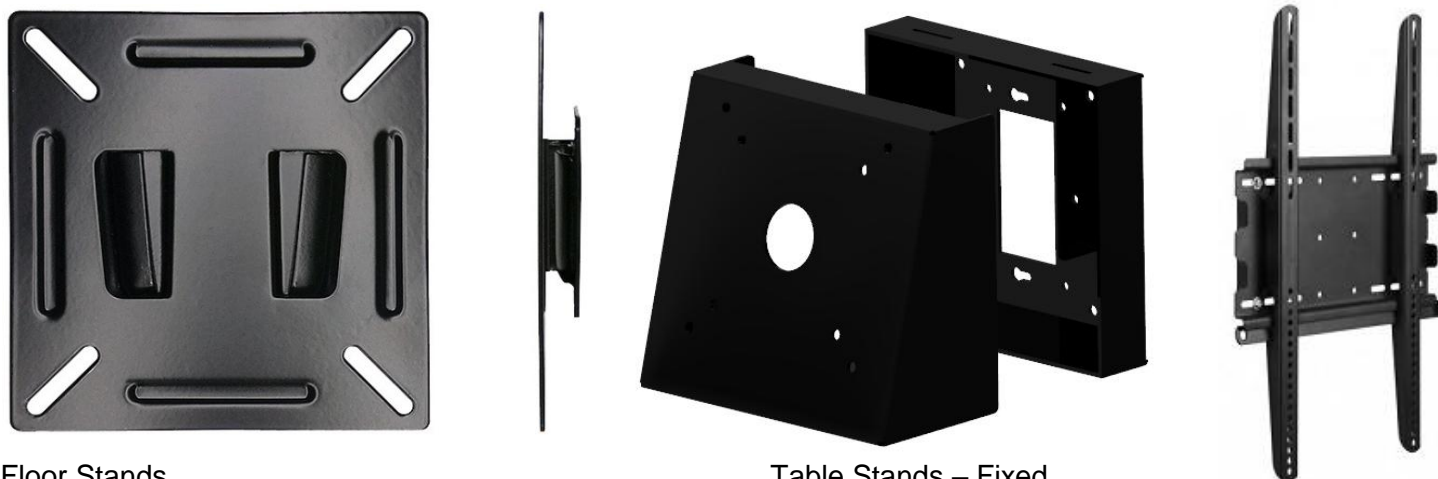
## Accessories

### Overview

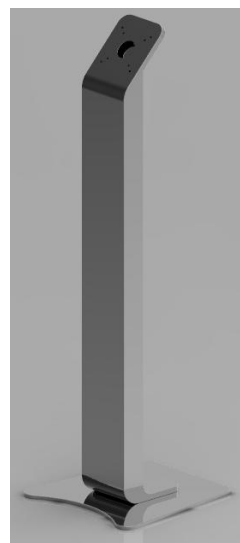
We offer a variety of have a wide range of quality accessories compatible with our touch screens, touch monitors, touch panel PCs and interactive flat panels products, including Stands & Mounts, Peripherals, Computer Modules, Wall Mounts Brackets, Floor Stands and Table Stands etc. We offer wide range of VESA mounting devices, which are used for tablets, monitors, touch monitors, POS terminals, as well as the all-in-one touch displays and panel PCs. The wall mounts provide the possibility of integrating the product in a wall or simply hang on a wall, taking ventilation into account. Our floor stands are customizable and available in three colors with powder-coated sturdy & durable whole aluminum & steel construction. Expanding them with MSR card readers, scanners and poster holders allow the stand to run as kiosks and display stands.

### Stands & Mounts

#### Wall Mount



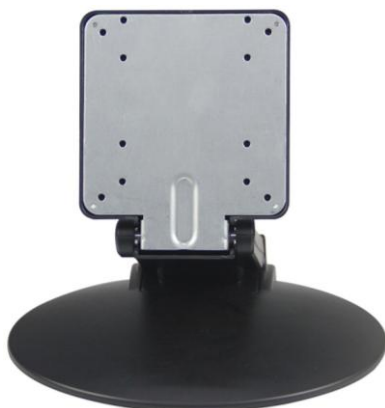
#### Floor Stands



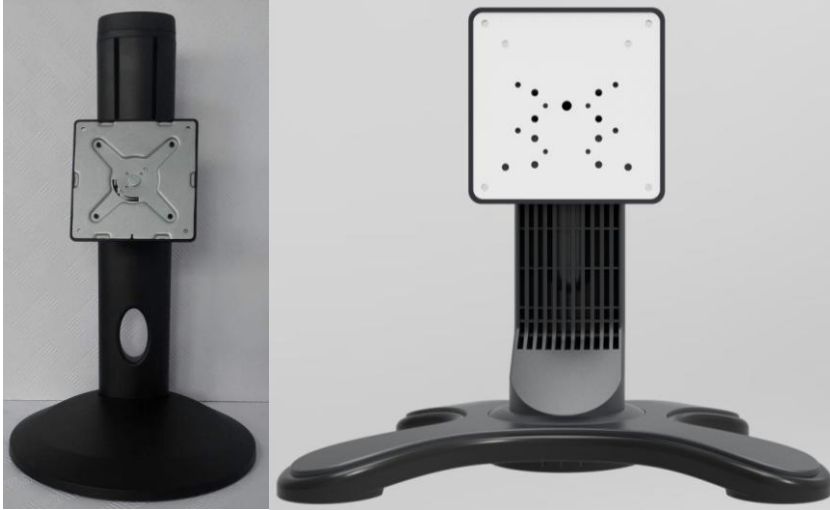
#### Table Stands – Fixed



#### Table Stands – Folding



## Table Stands – Rotating



## Peripherals

### Magnetic Stripe Readers



### Touch Stylus



## Computer Modules

### Windows Computer Modules



### Android Computer Modules



